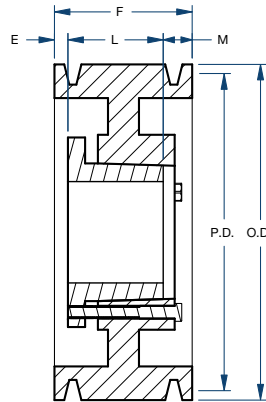


# Sheaves

## 5V SERIES 10 GROOVE/QD



# BLACKSTAR®



Type A

Part Number	Bushing	Bore Range	Type	Diameter (in)		Dimensions (in)				Weight less Bushing (lbs)
				Pitch	Outside	E	F	L	M	
10-5V800E	E	7/8 – 3-1/2	A	7.90	8.00	2-3/32	7-3/16	2-3/4	2-11/32	37.6
10-5V850E	E	7/8 – 3-1/2	A	8.40	8.50	2-3/32	7-3/16	2-3/4	2-11/32	44.5
10-5V900F	F	1 – 4	A	8.90	9.00	1-31/32	7-3/16	3-3/4	1-15/32	51.3
10-5V925F	F	1 – 4	A	9.15	9.25	1-31/32	7-3/16	3-3/4	1-15/32	53.0
10-5V975F	F	1 – 4	A	9.65	9.75	1-31/32	7-3/16	3-3/4	1-15/32	56.0
10-5V1030F	F	1 – 4	A	10.20	10.30	1-31/32	7-3/16	3-3/4	1-15/32	64.0
10-5V1090F	F	1 – 4	A	10.80	10.90	1-31/32	7-3/16	3-3/4	1-15/32	72.0
10-5V1130F	F	1 – 4	A	11.20	11.30	1-31/32	7-3/16	3-3/4	1-15/32	77.0
10-5V1180F	F	1 – 4	A	11.70	11.80	1-31/32	7-3/16	3-3/4	1-15/32	81.0
10-5V1250J	J	1-1/2 – 4-1/2	A	12.40	12.50	2-1/8	7-3/16	4-5/8	7/16	112.0
10-5V1320J	J	1-1/2 – 4-1/2	A	13.10	13.20	2-1/8	7-3/16	4-5/8	7/16	116.0
10-5V1400J	J	1-1/2 – 4-1/2	A	13.90	14.00	2-1/8	7-3/16	4-5/8	7/16	130.0
10-5V1500J	J	1-1/2 – 4-1/2	A	14.90	15.00	2-1/8	7-3/16	4-5/8	7/16	138.0
10-5V1600J	J	1-1/2 – 4-1/2	A	15.90	16.00	2-1/8	7-3/16	4-5/8	7/16	146.0
10-5V1870J	J	1-1/2 – 4-1/2	A	18.60	18.70	1/8	7-3/16	4-5/8	2-7/16	157.0
10-5V2120J	J	1-1/2 – 4-1/2	A	21.10	21.20	1/8	7-3/16	4-5/8	2-7/16	168.0
10-5V2360M	M	2 – 5-1/2	A	23.50	23.60	11/32	7-3/16	6-3/4	3/32	213.0
10-5V2800M	M	2 – 5-1/2	A	27.90	28.00	11/32	7-3/16	6-3/4	3/32	240.0
10-5V3150M	M	2 – 5-1/2	A	31.40	31.50	11/32	7-3/16	6-3/4	3/32	275.0
10-5V3750M	M	2 – 5-1/2	A	37.40	37.50	11/32	7-3/16	6-3/4	3/32	315.0
10-5V5000M	M	2 – 5-1/2	A	49.90	50.00	11/32	7-3/16	6-3/4	3/32	458.0